

The power, flexibility and speed of Integral *mForms*™ have made it the answer for any type of work in any industry:

- Asset Management
- Banking, Finance, Insurance, Business Services, Property
- Customer Relations Management
- Distribution, Logistics, Transport
- Education, Training
- Facilities Management
- Government, Local Authority, Public Sector
- Inspection and Certification
- IT and Telecommunications, Manufacturing, Engineering
- Media, Leisure, Travel, Entertainment, Marketing, PR
- Medical, Healthcare, Pharmaceutical
- Oil, Gas, Mining, Construction, Agriculture
- Retail/Wholesale Services
- Security
- Service Management
- Survey and Audit
- Utilities: Energy & Water

Why go mobile?

Different businesses and organisations will have varying compelling reasons to computer-enable their mobile workforce. Benefits of going mobile include:

- Reduce overheads by automating data flow
- Reduce Working Capital by faster completion of business processes and tighter inventory control
- Reduce operating costs by improving remote worker output and reducing errors
- Provide secure and robust transaction audit trail
- Improve performance and customer satisfaction with timely and accurate flow of information to staff and management

Who is Integral Mobile Data?

Integral Mobile Data (IMD) is a leader in Rapid Application Development and Deployment (RADD) systems for mobile computing solutions. At its simplest, we mobilise the worker freeing them to record, send and receive information at any time, from any location - deliver business-critical information when and where it is required. Our software is currently deployed in companies across the business spectrum, from SMEs to Fortune 500.

The Solution

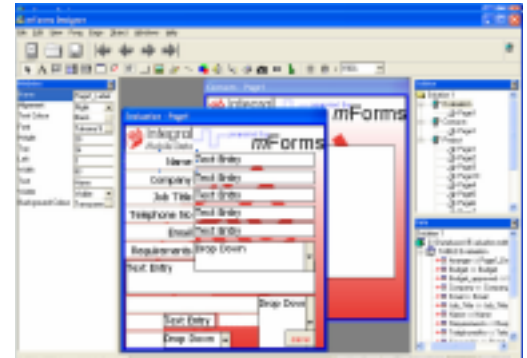
Integral *mForms*™ is a mobile data management application toolset. It's the fastest, most powerful and cost-effective means to deliver solutions for field worker automation and mobile business process workflow integrated to corporate databases and systems. It enables businesses to create bespoke solutions at off-the-shelf costs with out-of-the-box speed.



Integral *mForms*™ is a comprehensive product and enables specific mobile applications to synchronise with any and multiple databases, providing a common mobile gateway for enterprise information integration. It boasts very high security levels for the remote device and data in transmission. In the event of a device itself being lost or stolen Integral *mForms*™ provides the ability to remotely stun or kill it - rendering it inoperable or wiping it clean.

Full Smart Client occasionally-connected functionality, assured data integrity and full data compression is provided by advanced message-queuing technology.

Integral *mForms*™ Designer software, uniquely for mobile applications, enables design, integrate and deploy as a single process - meaning solutions can be developed in hours, integrating with any and multiple databases, deployed and administered wirelessly over any communication medium.



Ongoing communication costs are an important aspect of any decision to invest in mobile computing. With Integral *mForms*™ advanced compression technology results in considerably lower network costs, especially when compared to web-based solutions. Integral *mForms*™ operates on a wide range of handheld devices and offers 'out-of-box' support for signature capture, GPS/tracking solutions, digital camera, microphone, barcode reader, RFID reader and writer and mobile printers.

Advantages over traditional mobile solutions

- Develop and deploy in days - reducing time-to-market
- Achieve ROI in 6 weeks
- Extend the life and functionality of legacy IT investments
- Inclusion of all essential features (e.g. security) and optional functionality at no extra cost
- Multi platform - Write once, deploy many

Who we do it with

IMD has a well-established cross-industry partner programme for delivering the Integral *mForms*™ product suite to market. The programme offers Independent Software Vendors, Systems Integrators and Mobile Network Operators the ability to create mobile solutions for their customers tailored to the specific needs of their market sector or their existing IT infrastructure - speedily, reliably and cost-effectively. IT Partners reduce time to market, remove risk and uncertainty for themselves and their clients with a solution based on a tried and tested product set. Network Operators enhance uptake of high margin data traffic, and customer satisfaction by the speedy delivery of advanced wireless data services.



Reduce your overheads. Increase your profits. Empower your people.

The future is in your hands

Integral mForms™ Components.

Integral mForms™ Designer

The Designer is a simple to use "form" configuration tool allowing you to design data capture or data retrieval solutions for the enterprise environment, without writing code.

Integral mForms™ Device Runtime

The Device Runtime allows your mobile field worker to collect, process and retrieve data on their handheld device. It supports a wide variety of peripheral devices for the capture of multimedia data.

Integral mForms™ Communications Server

The Communications Server synchronises data with the Device Runtime to any back-office database using a variety of different communications standards.

Integral mForms™ Designer Features

- Single user interface designed to conform to the "Windows User Experience" guidelines.
- Ability to connect to multiple databases, design mobile data applications, mobile printing and wireless deployment.
- Powerful script language editor to deliver business process flow, workflow and complex algorithms on the handheld.
- Easy to use configuration wizards enable a "design once deploy many platforms" approach.
- Includes advanced database connection tools based on Microsoft ActiveX Data Objects (ADO), ODBC, XML and SOAP Web Services.

Integral mForms™ Device Runtime Features

- Native compiled code ensuring the best possible speed of execution with the least space usage on the device.
- Can use the powerful Microsoft SQLServer CE database to store data on the device.
- Supports multiple languages, multiple users per device, strong authentication, remote control of device for remote stun and kill.

Integral mForms™ Communications Server Features

- Efficient data compression technology reducing the time taken to transfer data.
- Static or dynamic updates to database.
- Message queuing to handle temporary loss of connection.
- Push engine to deliver tasks to handheld devices.
- Supported synchronisation methods and device include:
 - 3G / EDGE / GPRS / GSM
 - Wireless LAN / WIMAX
 - Wireline Modem
 - Serial Communications
 - Ethernet Connection
 - Bluetooth

Integral mForms™ Security Features

- All stored data is encrypted to ensure data security.
- Password and username protected to prevent unauthorised access to data.
- Minimum 128 bit encryption of all data whilst in transit.
- Device immobilisation – can kill, clear or lock device

Supported Multimedia Devices

Integral mForms™ supports: Digital Camera, Microphone, Barcode Reader, RFID Reader & Writer, GPS, Integrated Satellite Navigation and Printers.

Integral mForms™ Recommended Handheld Device Specification

- Operating systems: Microsoft Windows CE V3 or above (including Pocket PC, & .NET and Microsoft Smartphone), Windows XP Tablet PC edition and Blackberry OS V4 or above
- Supported CPUs: x86, MIPS, ARM, SH3/4 (85Mhz or above).
- Memory: Minimum 16MB RAM, 8MB Storage, (Optional flash program storage occupies 4MB).
- Screen: Supports sizes from 1/8 VGA to XGA



Contact Us

Integral Mobile Data Limited

Pembroke House
Ty Coch Lane, Llantarnum Park Way
Cwmbran NP44 3AU

Tel: +44 (0) 870 080 1808

Email: enquiries@integralmobiledata.co.uk

web: www.integralmobiledata.co.uk



Reduce your overheads. Increase your profits.
Empower your people.

The future is in your hands